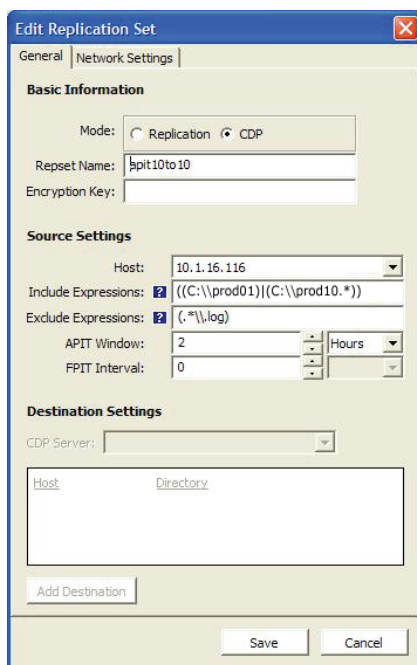


NetVault: TrueCDP™

FAST FACTS

- *NetVault: Backup option that leaves no gaps in protection*
- *Support for Linux file systems*
- *Minimizes data loss potential to seconds rather than hours*
- *File system changes are captured in real-time*
- *Local any-point-in-time (APIT) recovery*
- *Remote fixed-point-in-time (FPIT) snapshot recovery*
- *Recovery is time-based with recovery points limited only by disk space*
- *No installation related downtime*
- *Transparent operation minimizes impact to production resources*
- *Award winning BakBone service and support*



Fast and Granular Recovery of High Value, Time-Sensitive Data

If the success of your organization is tied directly to your ability to provide fast, granular recovery of high value, time-sensitive data, NetVault: TrueCDP is your ticket to peace of mind. NetVault: TrueCDP brings next-generation technology to the mature, reliable NetVault: Backup product suite by providing a tool set that lets you protect and recover data for today's ambitious Recovery Point Objective (RPO) & Recovery Time Objective (RTO) demands—not last decade's. Tightly integrated with BakBone's award winning NetVault: Backup solution, NetVault: TrueCDP allows you to continuously capture byte-level file system changes in real-time. NetVault: TrueCDP offers a choice of any-point-in-time (APIT), as well as fixed-point-in-time (FPIT) snapshot data recovery for Linux environments.

KEY BENEFITS

In order to remain competitive, your business continuity requirements call for much faster and more granular recovery of your most critical data.

NetVault: TrueCDP is the best solution for IT administrators under increasing pressure to not only protect their organization's high value, time-sensitive data – but to ensure the availability of that data as well. NetVault: TrueCDP provides you with the technology required to meet the demands of even the most ambitious business continuity requirements in a simple, well integrated and cost effective solution. Download and test drive free evaluation copies of NetVault: Backup and optional NetVault: TrueCDP from the BakBone web site today. *Experience the efficiencies of simple, well integrated data protection.*

Fast and flexible recovery options for file system data

NetVault: TrueCDP enables fast recovery capabilities for file system data in Linux environments. Integrated with NetVault: Backup, NetVault: TrueCDP provides real-time continuous data protection for your organization's most critical data – helping you to recover and rebuild your computing environment quickly and easily. *Ambitious RTO's? Meet NetVault: TrueCDP.*

Avoid costly gaps in data protection

Don't be misled by the assortment of "CDP" point products that offer only Near-CDP functionality - making you perform recovery

via planned snapshots. While this level of functionality may meet your requirements today, the reality is that interruptions are random. Recovery from snapshots may be good enough in the off chance you take a snapshot of your most valuable data mere seconds before an interruption. However, the chances of this occurring on a regular basis are highly unlikely. Therefore, you must also consider your RPO requirements down the road as well. The ability to "rewind and recover" your organization's most critical data to a point where it provides high value will be a key factor in your ability to remain competitive. NetVault: TrueCDP offers users both APIT and snapshot recovery of critical data. *Aggressive RPO's? Meet NetVault: TrueCDP.*

Integration is more than just products that all come in the same color box

NetVault: TrueCDP is a vital component of BakBone's Integrated Data Protection (IDP) strategy – a unique, industry shaping approach to data protection that recognizes and delivers upon the call for a convergence of backup and recovery technologies. For you, BakBone's IDP strategy means a much lower cost of implementation – faster ROI, significantly reduced training time and expenditures, ease of management, interoperability with your existing (and future) infrastructure and perhaps most important – simplicity. *NetVault: TrueCDP is the best continuous data protection solution for Linux environments.*

SYSTEM REQUIREMENTS

- Linux
- Minimum NetVault: Backup release supported: v8.0

Specifications and system requirements subject to change without notice.

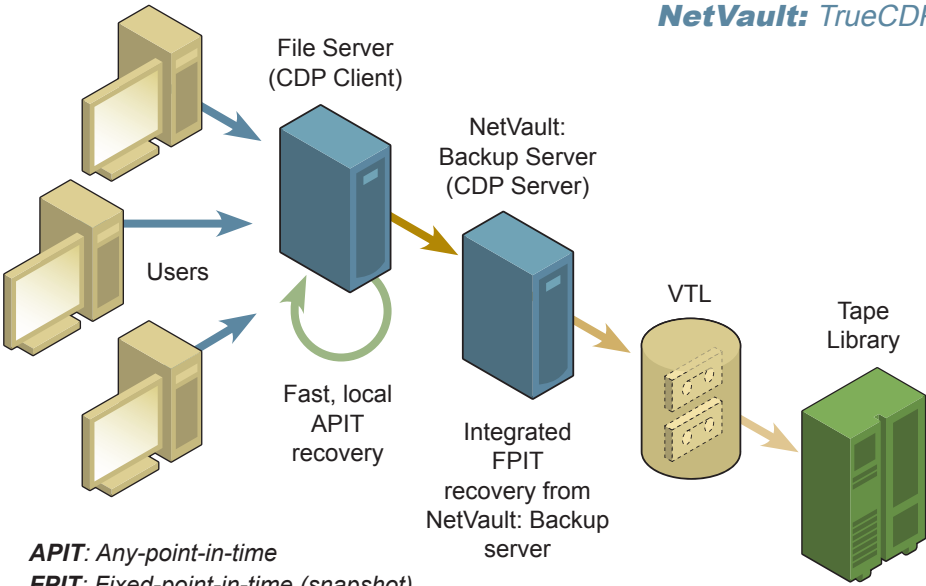
For updated information, please visit www.bakbone.com/truedcp

DOWNLOAD A FREE EVALUATION COPY

of NetVault: TrueCDP from www.bakbone.com/products/downloads

(Note: NetVault: Backup is required in order for a successful NetVault: TrueCDP evaluation)

Are you really getting the functionality necessary to support your business continuity requirements?



NetVault: TrueCDP

APIT: Any-point-in-time
FPIT: Fixed-point-in-time (snapshot)

SNIA (Storage Networking Industry Association) defines "True-CDP" as "a methodology that continuously captures or tracks data modifications and stores changes independent of the primary data, enabling recovery points from any non-predetermined point in the past." If your CDP solution does not offer this specific functionality, it is not True-CDP. If not True-CDP, are you sure it's really good enough today? Will it really be good enough tomorrow?

Integrated Data Protection

BakBone's Integrated Data Protection™ (IDP™) strategy provides a comprehensive suite of integrated, heterogeneous cross-platform data protection technologies that are seamlessly managed from a single console. IDP enables administrators to easily and cost-effectively achieve high data availability, set schedules, manage policies, as well as control and report on their storage environment. BakBone's IDP framework consists of two key layers: the Core Services Managers™ and the individual data availability and protection technologies. BakBone's technology portfolio today consists of NetVault: Backup, a comprehensive backup and recovery solution, NetVault: Report Manager, advanced storage reporting and NetVault: Replicator, a replication solution for high availability.

ABOUT BakBone

BakBone Software (PK:BKBO) is a leading global data protection provider that develops and distributes data backup, restore, and disaster recovery software for network storage and open-systems environments worldwide. BakBone delivers scalable solutions that address the complex demands of large enterprise environments, as well as small and medium-sized businesses. Founded in 2000, BakBone products are used by Fortune 1000 corporations and domestic and international government entities. Distributed through a select global network of OEM partners, resellers and solution providers, interested companies can find more information about BakBone's products and services at www.bakbone.com or email info@bakbone.com.

BakBone®, BakBone Software®, NetVault® Integrated Data Protection™, Scheduling Manager(TM), Control Manager™, Reporting Manager™, Policy Manager™, Security Manager™, Application Plugin Module™, APM™, TrueCDP™ and the BakBone logo® are all trademarks or registered trademarks of BakBone Software, Inc., in the United States and/or in other countries. All other brands, products or service names are or may be trademarks, registered trademarks or service marks of, and used to identify, products or services of their respective owners.

www.bakbone.com

| | | |
|--|--|--|
|  | <p>BakBone Global Headquarters 9540 Towne Centre Drive, Suite 100 San Diego, CA 92121 Toll Free Phone: 877-939-2663 Phone: 858-450-9009 Fax: 858-450-9929 Email: sales@bakbone.com</p> | <p>Pacific Rim Headquarters Shinjuku Dai-ichi-Seimei Bldg. 11th Floor 2-7-1 Nishi Shinjuku, Shinjuku-ku Tokyo, Japan 163-0711 Phone: 81-3-5908-3511 Fax: 81-3-5908-3512 Email: sales@bakbone.co.jp</p> |
| <p>Europe Headquarters 100 Longwater Avenue Green Park Reading RG2 6GP United Kingdom Phone: 44 (0)1189-224-800 Fax: 44 (0)1189-224-899 Email: sales_europe@bakbone.com</p> | | |