

**Simpana® 10 Software Highlights:**

Simpana software extends the industry leading backup and disaster recovery capabilities from CommVault with:

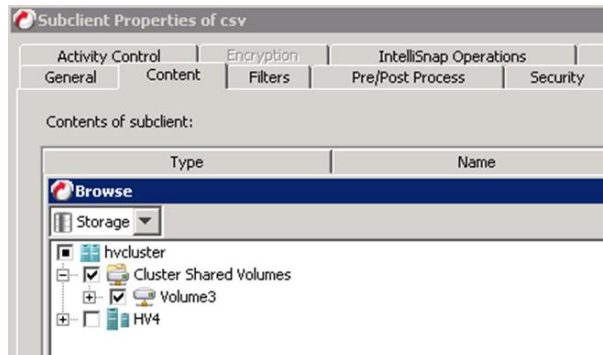
1. **IntelliSnap™ for Virtual Servers** – meet Tier One Application SLAs with array-based snapshot management
2. **Massive Scalability** – optimized to protect and manage VMs and data from a single Hyper-V instance to thousands of VMs across the enterprise.
3. **Enhanced Custom VM Auto-discovery and Filtering Rules**
4. **Fast, Flexible Recoveries** –extensive options for scheduling restores, provisioning VMs, power-on or rename VMs while recovering from snapshots, backups or DR copies with a single console.
5. **Workflow Automation** for streamlined operations
6. **Windows Server 2012 Support** – cluster aware protection for CSV and Live Migration.
7. **Operational Reporting** delivers insight into the entire environment to help achieve operational excellence.

## Data Management for Microsoft Hyper-V Deployments

CommVault® Simpana® 10 software’s Virtual Server Agent (VSA) is the industry leader in meeting the unique challenges of protecting a virtual environment. Simpana 10 software scales seamlessly to support the most demanding enterprise deployments running Hyper-V deployments.

### Cloud Scale Data Management

- Protect hundreds of VMs in minutes with IntelliSnap™ technology for heterogeneous management of array-based hardware snapshots.
- Leverage deep integration with Windows Server 2012, including full support for VHD and VHDX.
- Cluster aware protection with full integration for CSV and Live Migration.
- Embedded deduplication reduces network traffic by up to 90% and the full backup window by almost 50%.
- Built-in resiliency and scalability controls by leveraging load balancing, failover and high performance.
- Scale to protect thousands of VMs across the enterprise.
- Application integrated protection ensures application consistent protection and rapid application recovery within VMs.



### Data Management for the Scope of the Modern Enterprise

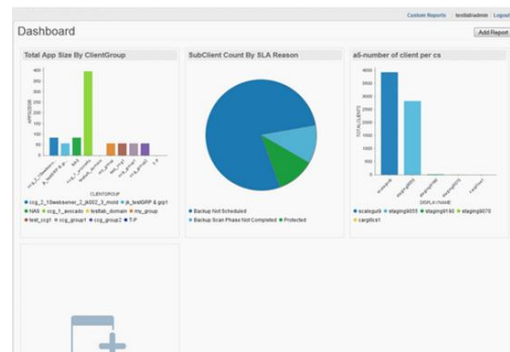
- Manage data across physical & virtual environments with a single, integrated solution.
- Broad virtualization hypervisor from VMware and Microsoft Hyper-V support is fully integrated.

### Mission-Critical Recovery and Retention Options

- Meet business critical recovery SLAs with IntelliSnap™ technology for rapid recovery of VMs, files or application data from a single pass operation.
- Accelerate application-level Exchange restores with individual mailbox or message level restores from an offline point in time VM snapshot.
- Create secondary and DR copies on tiered disk or tape leveraging fast efficient DASH™ Copy technology.

### Streamline Operations with Automated Workflows and Advanced Reporting

- Let no VM go unprotected with advanced auto-protection, leveraging fully custom policies for auto-discovery and filtering.
- Streamline repetitive and highly complex tasks with workflow automation.
- Achieve operational excellence with custom reporting options that deliver summary, dashboard and instrumentation level reporting on the entire operating environment, not just the backups.
- Enable self-service access to VM data via web consoles for VM recoveries.
- Manage the environment, not the licenses with simplified capacity based licensing, which includes unlimited agents.



## KEY CAPABILITIES AND BENEFITS

**IntelliSnap™ for Virtual Servers** Protect 100's of Virtual Machines (VMs) in minutes. Create rapid fire, policy-based persistent HW snapshots that deliver near instant recovery of virtual machines. Offload backup from production HyperV servers to stand-by Windows Server with HyperV role.

**Embedded Source-side Deduplication** Reduce backup windows and eliminate redundant backup data sets with CommVault's industry leading deduplication technology.

**Enhanced Auto Protection of Virtual Machines** Guarantee protection for VMs across the enterprise with fully customizable VM discovery, VM filtering and catch-all protection policies

**Application aware and consistent data protection** Deep application level awareness ensures virtualized applications are protected are application consistent and rapidly recoverable

**Rapid recoverability with hardware snapshots** Meet tier one and business critical application SLAs for recovery points (RPO) and time (RTO) by leveraging fully cataloged, fully searchable array-based snapshot copies

**Extensive recovery options and granularity** Single interface enables recovery of files, volumes, applications or full VMs from either a snapshot or a deduplicated backup copy to streamline recovery operations across the environment.

**Web Console for self-service data access** Streamline operations and accelerate access to data with self-service options for recovery of VMs applications and data.

**Workflow Automation** Streamline operations by automating repetitive or highly complex tasks

**Broad Hyper-V Support Options** Windows Server 2012 including VHD and VHDX formats  
Cluster aware protection for CSV and Live Migration

**Broad Virtual Server Platform Support** Microsoft Hyper-V Server  
VMware vSphere and ESX server



For more information about Simpana® software modules and solutions, and for up-to-date system requirements, please visit [www.commvault.com](http://www.commvault.com)

[www.commvault.com](http://www.commvault.com) • 888.746.3849 • [info@commvault.com](mailto:info@commvault.com)  
CommVault Worldwide Headquarters • 2 Crescent Place • Oceanport, NJ 07757  
Phone: 888.746.3849 • Fax: 732.870.4525

CommVault Regional Offices: United States • Europe • Middle East & Africa • Asia-Pacific • Latin America & Caribbean Canada • India • Oceania

©1999-2013 CommVault Systems, Inc. All rights reserved. CommVault, CommVault and logo, the "CV" logo, CommVault Systems, Solving Forward, SIM, Singular Information Management, Simpana, CommVault Galaxy, Unified Data Management, QiNetix, Quick Recovery, QR, CommNet, GridStor, Vault Tracker, InnerVault, QuickSnap, QSnap, Recovery Director, CommServe, CommCell, IntelliSnap, ROMS, Simpana OnePass, and CommValue, are trademarks or registered trademarks of CommVault Systems, Inc. All other third party brands, products, service names, trademarks, or registered service marks are the property of and used to identify the products or services of their respective owners. All specifications are subject to change without notice.